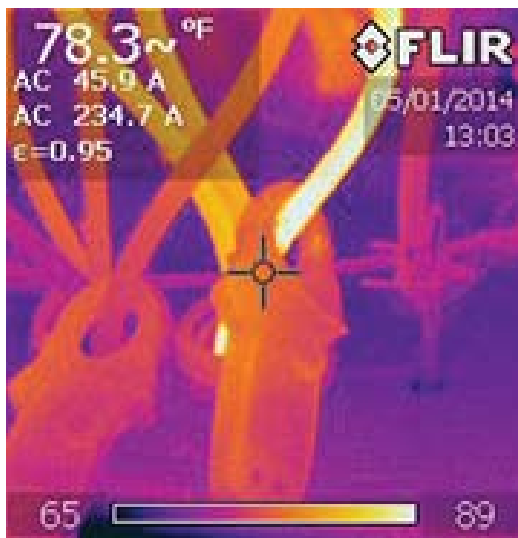


Infrared images have long been known to be effective tools in identifying potential problems before costly damage or power interruptions take place. Votaw Electric now incorporates infrared capabilities in our preventative maintenance services as part of a lean approach to electrical system inspection, cleaning, lubricating, torquing, and testing procedures



A new development in infrared technology enables electrical current readings to be directly imported, using Bluetooth technology to an infrared image to provide valuable analysis assistance in determining the contribution of current overloads or unbalance in overheated equipment. This has not previously been available, making informed conclusions more difficult. This can now be done very cost effectively without separate intermediate steps being required. The current data is linked directly to the image for storage and retrieval without transfer errors. Electrical currents and heating are so interrelated that it only makes sense to capture both parameters in one efficient step. Our surveys are done by licensed electricians certified in infrared survey techniques.

Unlike other infrared surveying services, we provide complete turnkey follow through. We identify, correct and verify as part of our comprehensive approach. We close the loop on heat issues at a lower total cost.

To further leverage efficiency and lower predictive maintenance costs, the capturing of infrared and digital picture images during the data collection phase of an arc flash hazard analysis is the logical step when technicians are already equipped with the PPE to do it safely and in compliance with NFPA 70E.



The circuit-loading characteristics should be included as part of the documentation provided in 11.17.5.4 NFPA 70B

For more information, contact us at
260-482-7099 or www.votawelectric.com